

Connection help

For advanced settings e.g. to change the name (SSID) of your hotspot check the Frequently Asked Questions at bt.com/minihom hotspot600

All the lights are off

- Make sure the hotspot is switched on. Press the **Power** button to switch on hotspot.

Can't connect to hotspot using wi-fi

- Make sure you've used the correct wireless network and key details printed on the settings card.
- If you don't know how to view the list of wireless devices in your area to connect to the hotspot, see help provided with your device. Or check the Frequently Asked Questions at bt.com/minihom hotspot600

Poor wi-fi performance

- If your new hotspot and your existing wireless broadband router show up as two separate networks, you may want to try both wi-fi networks as one might be faster and more reliable than the other.
- Don't know if you're connected to the router or one of the hotspots? The easiest way is to compare the signal strength displayed on your device with the hotspot switched on and off.
- Do not use the hotspot in an area where microwave and electric equipment may interfere with the wireless signal.
- Try to move the device nearer to your hotspot, which can improve the wireless signal quality.
- Thick/concrete walls and ceilings may affect wi-fi.

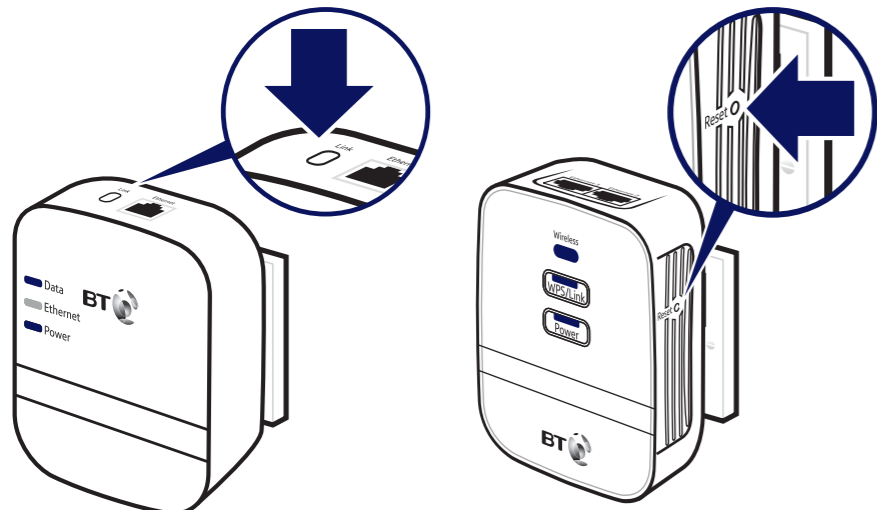
WPS/Link light is off or flashing

- If you are adding the hotspot to your existing network, press the **WPS/Link** button on your hotspot for 1 second (Power light starts flashing). Within 2 minutes, press the **Link** button on one of the broadband extenders already in your home for 1 second to complete the connection. The **WPS/Link** light will be steady green.
- To check if your home's electrical wiring is affecting your broadband extenders, try plugging units in the same room. Some old wiring or fuse boxes might affect your network performance.
- House appliances that draw large amounts of power, like refrigerators, freezers, microwaves and air conditioning systems, might cause interference with your network.
- For best network performance, use broadband extenders from BT.
- If there are no spare ports on your router/hub, you can unplug one of your existing devices and use an alternative like wi-fi or purchase a switch.

Reset to factory settings

If your extender or hotspot stops working or becomes unpaired, you can reset both to their factory settings:

- 1 Make sure the extender or the hotspot is plugged in and the power socket's switched on.
- 2 Press the **Link** button on the extender for more than 15 seconds or the **Reset** button on the hotspot for 1 second to restore factory default settings. Give it a couple of minutes. If everything's okay, the **Power** indicator on both will light up.



How to add more Powerline extenders to your existing network

You can expand your home network by adding more extenders to your existing kit.

- 1 Plug your additional broadband extender directly into a wall power socket. Make sure the socket's switched on.
- 2 Press the **Link** button on your additional broadband extender for 5 to 8 seconds. Wait for the **Power** light to go back to steady green.
- 3 Press the **Link** button again, this time for 1 second.
- 4 Within 2 minutes, press the **Link** button on one of the broadband extenders already in your home for 1 second to complete the connection to the network.
- 5 Wait for connection to complete. If everything's okay, the **Power** and **Data** indicators on the new extender will light up.

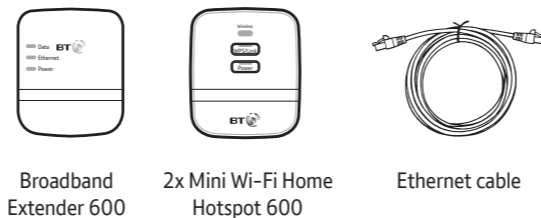
TIP: you might find it easier to plug your new broadband extender in the same double power socket or near one of your existing ones whilst you set things up.

To connect using the ethernet cable

- 1 Connect your device to one of the ethernet ports on the hotspot.

You'll need an ethernet cable for each device you want to connect to the hotspot.

Box contents



Find out more

- If you need more help, go to bt.com/minihom hotspot600 where you can view Frequently Asked Questions.
- If you cannot find the answer to your problem in the Frequently Asked Questions, then please call our free Helpline on **0808 100 6116***. Our dedicated advisors are more likely to be able to help you than the retailer where you made your purchase.

* Calls made from within the UK mainland network are free. Mobile and international call costs may vary.

Offices worldwide

The services described in this publication are subject to availability and may be modified from time to time. Services and equipment are supplied subject to British Telecommunications plc's respective standard conditions of contract. Nothing in this publication forms any part of a contract.

© British Telecommunications plc 2017. Registered Office: 81 Newgate Street, London EC1A 7AJ. Registered in England No. 1800000.

Designed and produced by The Art & Design Partnership Ltd.

Printed in China / Issue 2 / ADP08-17



General information

For information on safety instructions, technical information or setting up, please see the Frequently Asked Questions at bt.com/minihom hotspot600

Guarantee

Your Mini Wi-Fi Home Hotspot 600 Kit is guaranteed for a period of 3 years from the date of purchase. Subject to the terms listed below, the guarantee will provide for the repair of, or at BT's or its agent's discretion, the option to replace the Mini Wi-Fi Home Hotspot 600 Kit or any component thereof which is identified as faulty or below standard, or as a result of inferior workmanship or materials. Products over 28 days old from the date of purchase may be replaced with a refurbished or repaired product.

The conditions of this guarantee are:

- the guarantee shall only apply to defects that occur within the 3 year guarantee period
- proof of purchase is required
- the equipment is returned to BT or its agent as instructed.

This guarantee does not cover any faults or defects caused by accidents, misuse, fair wear and tear, neglect, tampering with the equipment, or any attempt at adjustment or repair other than through approved agents.

This guarantee does not affect your statutory rights.

To find out what to do if your kit is in or outside of the 3 year guarantee, please see the Frequently Asked Questions at bt.com/minihom hotspot600

How to recycle your equipment

The symbol shown here and on the product means that the product is classed as electrical or electronic equipment, so DO NOT put it in your normal rubbish bin.



It's all part of the Waste Electrical and Electronic Equipment (WEEE) Directive to recycle products in the best way – to be kinder to the planet, get rid of dangerous things more safely and bury less rubbish in the ground.

You should contact your retailer or supplier for advice on how to dispose of this product in an environmentally friendly way.

Radio Equipment Directive Declaration of Conformity

Hereby, British Telecommunications plc declares that the radio equipment type Mini Wi-Fi Home Hotspot 600 Multi Kit (084289) is in compliance with Directive 2014/53/EU.

The full text of the EU declaration of conformity is available at the following internet address:

bt.com/producthelp

This device has been evaluated for and shown compliant with European Guidelines when installed and operated with a minimum distance of 20cm between the unit and your body.

Radio transmission information

Frequency range 2401 – 2483MHz
Max power 19.47dBm 88.52mW

Mini Wi-Fi Hotspot 600 Power consumption

In operation	4.7 Watts
Network standby	2.7 Watts
Off mode	0.1 Watts

Broadband Extender 600 Power consumption

In operation	2.5 Watts
Network standby	1.9 Watts
Standby mode	0.4 Watts
Elapsed time before going into standby mode	5 Minutes



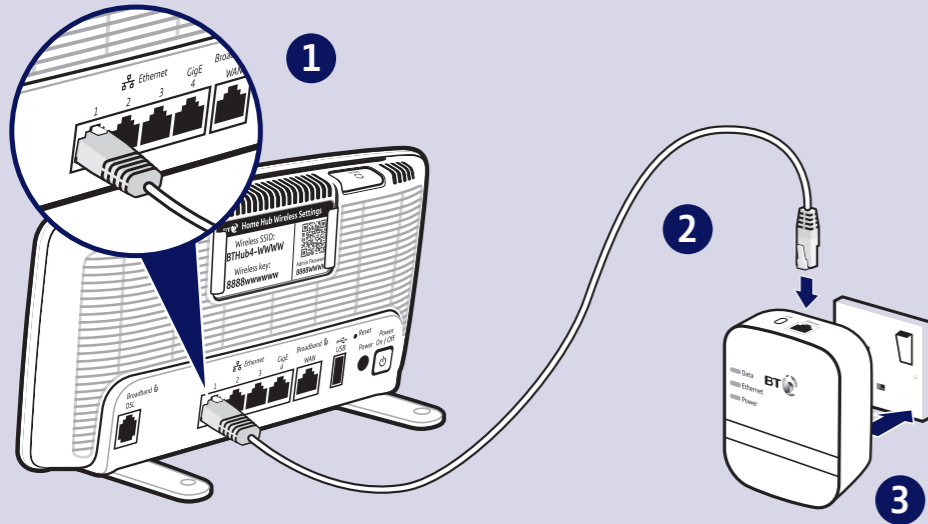
Mini Wi-Fi Home Hotspot 600 Multi Kit User Guide

1 Plug in extender near your router

- 1 Plug one end of the ethernet cable into a spare ethernet socket on your router/hub.
- 2 Plug the other end into the extender; it's called 'Broadband Extender' on the top.

IMPORTANT: to work properly, extender and hotspot must be plugged directly into the wall socket and not into extension leads.

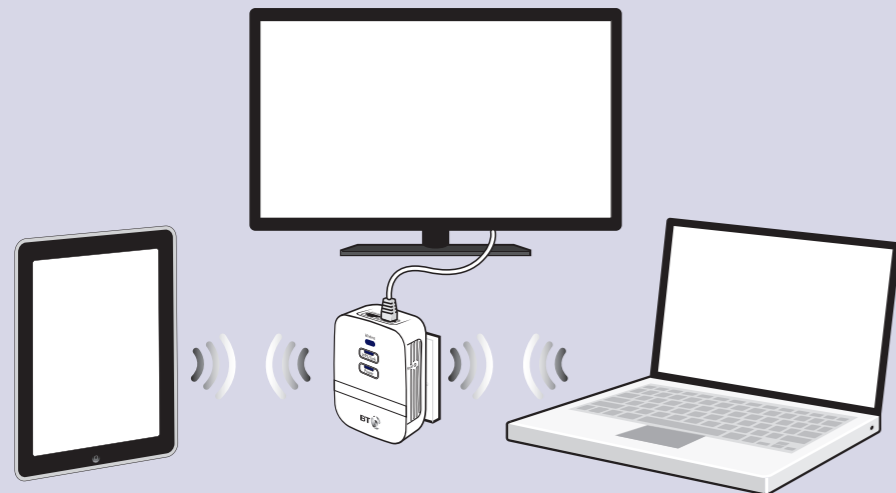
- 3 Plug the extender directly into a wall power socket. Make sure the socket's switched on.



3 Connect your devices

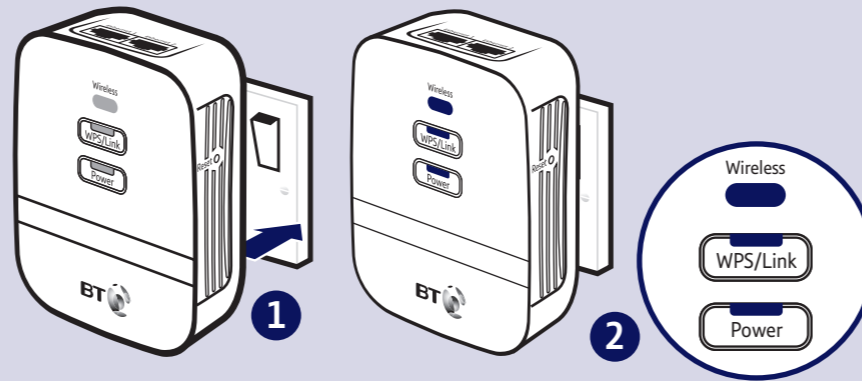
You can connect your devices using wi-fi or the ethernet cable.

- The hotspot can support separate devices connected to the ethernet ports and wi-fi at the same time.



2 Plug in your home hotspots

- 1 Plug the hotspot directly into a wall power socket near the device you want to connect. Make sure the socket's switched on.
- 2 Wait for connection to complete. Give it a couple of minutes. If everything's okay, the **Wireless**, **WPS/Link** and **Power** lights will be on.



If the **WPS/Link** light doesn't light up, see Connection help overleaf.

- 3 To install your second hotspot, repeat steps 1 and 2.

To connect using wi-fi

- The hotspot supports easy wi-fi connection with its WPS button. If your device also supports WPS, you can use it instead of manually connecting your device. Just follow the instructions on the device you're trying to connect to the hotspot.

- 1 Use the wireless connection software or settings on your device to display the list of available wireless networks in your area.
- 2 Find your hotspot in the list and select it; it's called **BTHomeSpot-XXX**.
- 3 Enter your hotspot's wireless key printed on the pull-out card.
- 4 Complete the connection on your device. Your device will work on both hotspots as they have the same name (SSID) and wireless key.

- The hotspot name (SSID) and wireless key can be found on the pull-out card at the back of the hotspot.



- Your new Wi-Fi Home Hotspot and your existing wireless broadband router will show up as two separate networks. If your device shows both networks, it's worth giving both of them a go as one might be faster and more reliable than the other.

Light status

Mini Wi-Fi Home Hotspot

Light	Colour	Status	What's happening
Power	Green	On	Hotspot running normally
		Flashing	Hotspot pairing
	-	Off	Hotspot turned off or boot-up failed
WPS/Link	Green	On	Hotspot connected to network, high transfer speed
	Green	Flashing	Hotspot connected to network, low transfer speed
	-	Off	Hotspot booting-up or boot-up failed or hotspot not connected to network
Wireless	Green	On	Wireless enabled, data is being transmitted/received
	-	Off	Hotspot booting-up or boot-up failed, or hotspot wireless disabled
	Orange	On	Wireless security disabled on the hotspot or guest network
	Green/Orange	Slow flashing	Wi-Fi cloning in progress
	Green/Orange	Fast flashing	Wi-Fi cloning failed
	-	Off	Wireless disabled

Broadband Extender 600

Light	Status	What's happening
Power	On	Extender running normally
	Flashing	Extender resetting, synchronising or power save mode
	Off	Extender turned off
Ethernet	On	Device connected to extender
	Flashing	Data being sent or received
	Off	No device connected to extender or device switched off
Data	On	Extender connected to network Green: High transfer speed Orange: Medium transfer speed Red: Low transfer speed
	Off	No connection to network

WPS/Link & Reset Buttons

What do you want to do?	Press and hold
Prepare to join a new network	WPS/Link button for 5 to 8 seconds
Join a new network or start WPS connection	WPS/Link button for 1 second
Reset to factory settings	Reset button for 1 second
Wi-Fi cloning	WPS/Link button for 15 seconds

Wi-Fi cloning optional feature

- The hotspot supports an additional wi-fi cloning feature that enables it to clone your router's name (SSID) and wireless key. If your device (e.g. laptop) is already configured to connect to your router, it will automatically connect to your new hotspot. This feature requires your router to support WPS; most recent routers do e.g. BT Home Hub 3 and later.

- 1 Plug the hotspot into a power socket near your broadband wireless router (e.g. in the same room). Wait until the **Wireless** light is steady green.
- 2 Press the **WPS** button on your router.
- 3 Within 2 minutes, press and hold the **WPS/Link** button on the hotspot for at least 15 seconds, until the **Wireless** light flashes orange and green.
- 4 Wait until the **Wireless** light returns to steady green. Now plug the hotspot back in where you want to extend coverage and wait for it to restart.
- 5 When in range, your wi-fi device will automatically connect to the hotspot.