

Your BT Freelance XT 3500 is now ready for use.

- 1 For additional handsets and chargers: plug the mains power adaptor connector (item code 052300) into the back of the charger and plug the other end into the mains wall socket and switch the power on.
 - 2 Activate the batteries as explained above.
 - 3 Place the handset on the charger to charge for 24 hours.
- If you ever need to remove the batteries, simply slide open the battery compartment cover and using the finger grip the batteries and pull them out.

Important: Charge the handset batteries for 24 hours or your phone may not work.

24 hrs



2 Charge

- 1 Activate the batteries by pulling the plastic tab away from the back of the handset.
- 2 Place the handset on the base to charge.
- 3 After 24 hours, plug the telephone line cord into the telephone wall socket.

General information

For information on safety instructions, cleaning, technical information or connecting to a switchboard, please refer to the 'General Information' section in the full user guide at www.bt.com/producthelp

Guarantee

Your BT Freelance XT 3500 is guaranteed for a period of 12 months from the date of purchase.

Subject to the terms listed below, the guarantee will provide for the repair of, or at BT's or its agent's discretion the option to replace the BT Freelance XT 3500, or any component thereof, (other than batteries), which is identified as faulty or below standard, or as a result of inferior workmanship or materials. Products over 28 days old from the date of purchase may be replaced with a refurbished or repaired product.

The conditions of this guarantee are:

- The guarantee shall only apply to defects that occur within the 12 month guarantee period.
- Proof of purchase is required.
- The equipment is returned to BT or its agent as instructed.

This guarantee does not cover any faults or defects caused by accidents, misuse, fair wear and tear, neglect, tampering with the equipment, or any attempt at adjustment or repair other than through approved agents.

This guarantee does not affect your statutory rights.

For further information within and outside the 12 month guarantee, please refer to the full user guide at www.bt.com/producthelp

Product disposal instructions



The symbol shown here and on the product means that the product is classed as Electrical or Electronic Equipment and should not be disposed with other household or commercial waste at the end of its working life.

The Waste of Electrical and Electronic Equipment (WEEE) Directive (2002/96/EC) has been put in place to recycle products using best available recovery and recycling techniques to minimise the impact on the environment, treat any hazardous substances and avoid the increasing landfill.

Product disposal instructions for residential users
When you have no further use for it, please remove any batteries and dispose of them and the product as per your local authority's recycling processes. For more information please contact your local authority or the retailer where the product was purchased.

Product disposal instructions for business users
Business users should contact their suppliers and check the terms and conditions of the purchase contract and ensure that this product is not mixed with other commercial waste for disposal.

Warning

This equipment is not designed for making emergency telephone calls when the power fails. Alternative arrangements should be made for access to emergency services.

R&TTE Directive & Declaration of Conformity

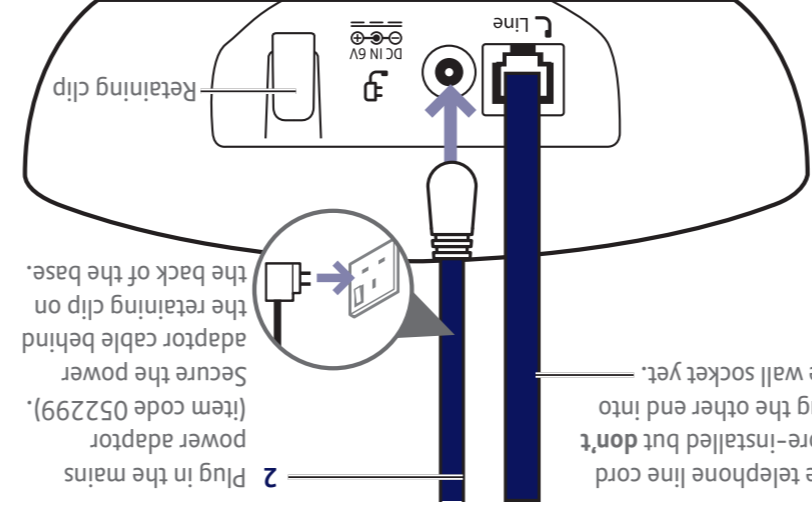
This product is intended for use within the UK for connection to the public telephone network and compatible switchboards.

This equipment complies with the essential requirements for the Radio Equipment and Telecommunications Terminal Equipment Directive (1999/5/EC).

For a copy of the Declaration of Conformity please refer to www.bt.com/producthelp

The answering machine will switch on and default to 'Answer and record' mode and the message counter will show 0.

- 1 Plug in the mains power adaptor (item code 052299). Secure the power adaptor cable behind the retaining clip on the back of the base.
- 2 Plug in the mains power adaptor (item code 052299). Secure the power adaptor cable behind the retaining clip on the back of the base.
- 3 Plug the other end of the power adaptor into the wall socket and switch on.



1 Plug in

For a Better Future

We're always looking to make our products last longer and use less power, so we don't have such a big impact on the environment.

To find out about what we are doing, visit bt.com/betterfuture

Offices worldwide

The services described in this publication are subject to availability and may be modified from time to time. Services and equipment are supplied subject to British Telecommunications plc's respective standard conditions of contract. Nothing in this publication forms any part of a contract.

© British Telecommunications plc 2012.
Registered Office: 81 Newgate Street, London EC1A 7AJ.
Registered in England No. 1800000.

Designed and produced by The Art & Design Partnership Ltd.

Printed in China / Issue 2 / ADP10-12



User Guide

- 1 Plug in
- 2 Charge
- 3 Go!



BT Freelance XT 3500

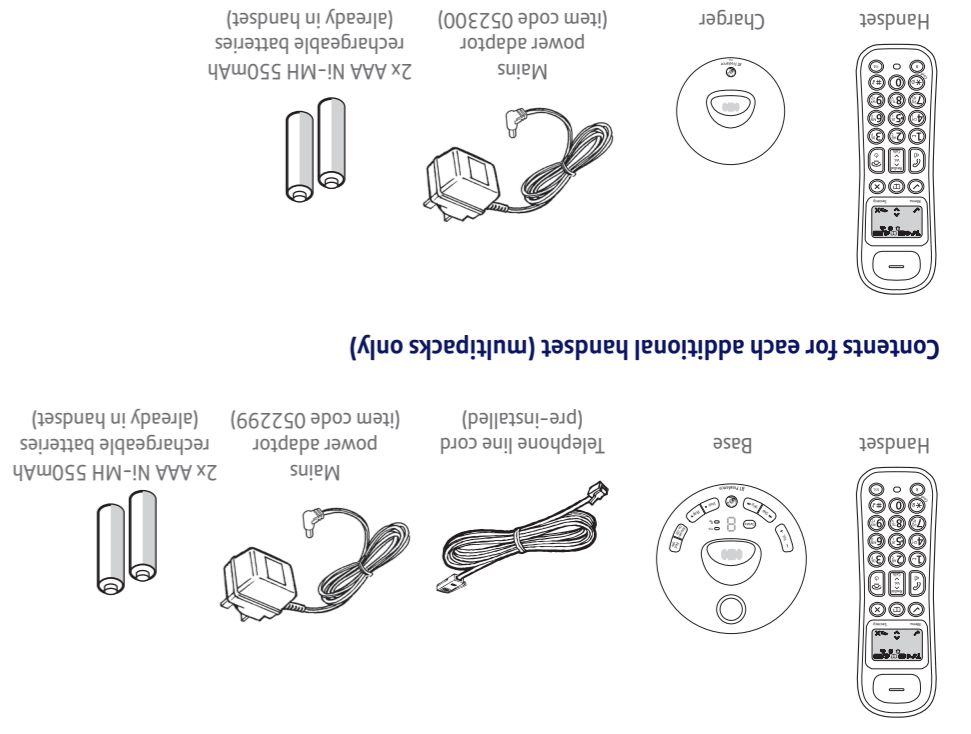
Digital Cordless Phone with Answering Machine

Setting up is easy. Just follow the simple steps in this guide.

If you'd like further help, or to view the full user guide, please visit our website bt.com/producthelp or call our helpdesk on 0808 100 6556*

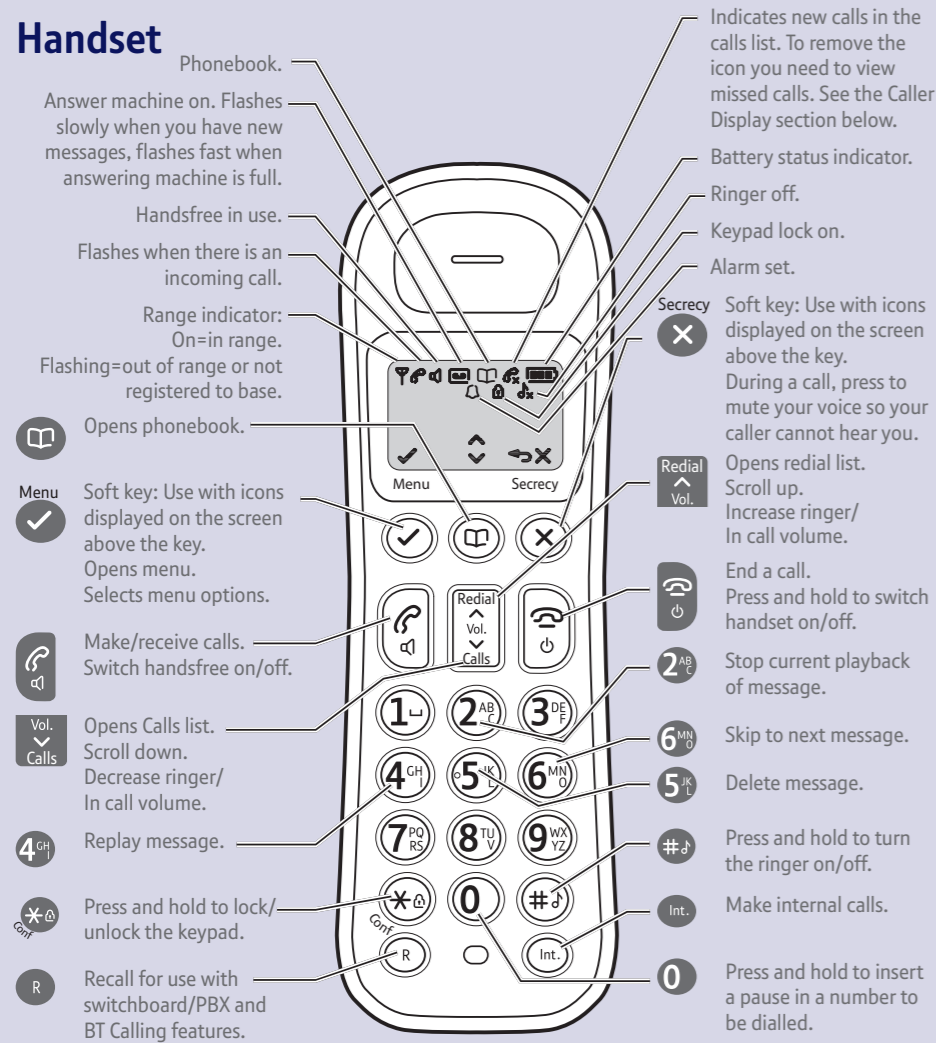
* Calls made from within the UK mainland network are free. Mobile and International call costs may vary.

Important: Only use the mains power adaptors, cables and rechargeable batteries supplied in this box, or this product may not work. Any replacement rechargeable batteries must be of the same type. BT accepts no responsibility for damage caused to your BT Freelance XT 3500 by using any other type of batteries.



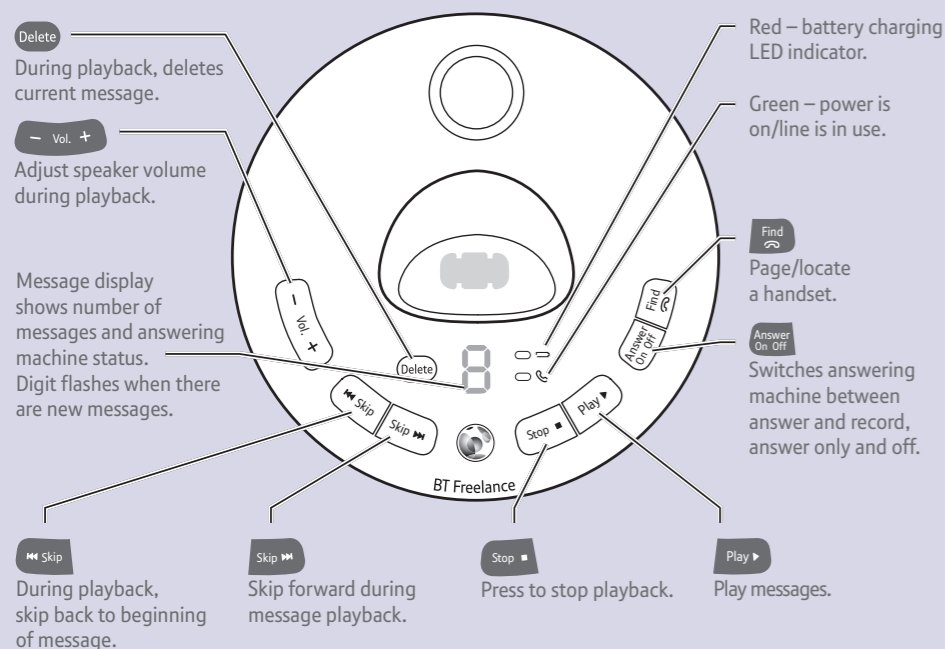
Your phone

Handset



The answer machine handset controls on buttons **2**, **4**, **5** and **6** will only work when a message is being played on the handset.

Base



3 Go!

Set date and time

Press **Menu**, scroll **Calls** to CLOCK/ALARM, press **Menu**. DATE/TIME is displayed, press **Menu**. Enter date in format (DD/MM/YY), press **Menu**. If you make a mistake, press **X** to delete. Enter the time in 24 hour format (HH:MM), press **Menu** to confirm.

If you have subscribed to a Caller Display service, the time will be set automatically when you receive your first call.

Making calls

Press **Call** then dial the phone number. Press **Call** to end the call.

Answering calls

If you have subscribed to Caller Display, the caller's details will be displayed before you answer (see below and also the full user guide online at www.bt.com/producthelp for details).

Lift the handset from the base or charger to answer incoming calls. If the handset is **not** on the base or charger, press **Call**.

Handsfree

Press **Call** during a call to switch between the earpiece and the loudspeaker.

Secrecy

During a call, press **X**. **SECURITY ON** is displayed and your caller cannot hear you. Press **X** to resume your call.

Redial (up to the last 10 numbers called)

Press **Redial** to open the list of most recently dialled numbers. Press **Redial** or **Calls** to scroll through the list.

Press **Call** to redial the number displayed or press **Menu** to access the options menu.

Phonebook

Storing new phonebook entries (up to 50 entries)

Press **Menu**. **PHONEBOOK** is displayed, press **Menu**.

If entries are already stored, the first entry will be displayed, you'll need to press **Menu** again. Otherwise display shows **NEW ENTRY**. Press **Menu**.

Display shows **ADD NAME**. Using the letters on the keypad, enter the name. You may need to press the same button a few times until the letter you want is displayed. For example, press **2** once for **A**, or twice for **B**. Press **Menu**.

Display shows **ADD NUMBER**. Enter the phone number and press **Menu** to confirm. The default melody will be displayed. Press **Redial** or **Calls** to select a melody and press **Menu** to confirm. You will hear a confirmation beep.

Dialling a phonebook entry

Press **Menu**. Scroll **Calls** to the entry you want and press **Call** to dial.

Caller Display and the Calls list

You must subscribe to a Caller Display service for this feature to work. Your network provider may charge you for this service.

View and dial from the Calls list

Press **Calls**, then **Redial** or **Calls** to scroll through the last 40 incoming calls.

Press **#** repeatedly to switch between the number and date/time of the call.

Press **Call** to dial the entry displayed.

Press **Menu** for further options.

Answering machine

Your answering machine is on and ready to record messages. The controls are shown in the base diagram on the bottom left and the features can also be accessed via the handset **ANS MACHINE** menu.

For detailed instructions on all the answering machine features see the full user guide online at www.bt.com/producthelp

Recording your own outgoing message

On the handset, press **Menu**, scroll **Redial** to **ANS MACHINE**, press **Menu**.

Press **Calls** to scroll to **OUTGOING MSG**, press **Menu**. The current setting is highlighted, scroll **Redial** or **Calls** to choose **ANSWER ONLY** or **ANS & RECORD** and press **Menu**.

Press **Calls** to scroll to **RECORD OGM** and press **Menu**.

After the long beep, speak your message into the handset. When finished, press **Menu**.

Your message will be played back to you.

Ring delay (sets number of rings before answer machine picks up the call)

For compatibility with BT 1571 or another voicemail service it is advisable not to set the ring delay to more than 6 rings.

Press **Menu**, scroll **Redial** to **ANS MACHINE** or **ANS & RECORD** press **Menu**.

Press **Calls** to **SETTINGS**, press **Menu**. **RING DELAY** is displayed, press **Menu**.

Press **Redial** or **Calls** to choose the setting you want (between 2-9 rings or Time Saver) and press **Menu**.

Set answer mode and switch on / off

Press **Menu**, scroll **Redial** to **ANS MACHINE**, press **Menu**.

Scroll **Calls** to **ANSWER MODE** and press **Menu**.

Scroll **Redial** or **Calls** to:

ANS & RECORD - press **Menu** to switch on and allow callers to leave a message.

ANSWER ONLY - press **Menu** to switch on and enable callers to hear an outgoing message only. They cannot leave a message.

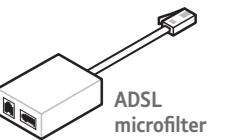
ANSWER OFF - press **Menu** to switch the answering machine off.

Press **X** to return to the previous menu level.

Help

Most problems can be fixed with a few simple checks.

Problem	Solution
No dial tone	Only use the cables and batteries supplied. Make sure both the mains power adaptor cable and telephone line cord are plugged into the correct sockets.
Poor speech quality	Make sure the product is not located too close to other electrical appliances. This can also help improve the handset range from the base.
Battery icon empty and is flashing slowly/handset dead	Make sure you charge the batteries for 24 hours before use to ensure maximum battery performance.
Using broadband on the same phone line?	Make sure you plug the phone into the wall socket via an ADSL microfilter (not supplied), otherwise you may have problems with this product and your broadband service.



Find out more

- New Frequently Asked Questions available at www.bt.com/producthelp
- If you need more detailed instructions, a full user guide is available to download from www.bt.com/producthelp
- If you cannot find the answer to your problem in the full online user guide, then please call our free Helpline on **0808 100 6556***. Our dedicated advisors are more likely to be able to help you than the retailer where you made your purchase.
- This document is also available in other formats, such as Large print, Braille and Audio CD. If you would like a copy, please call **0808 100 6556***.