

Your BT Diverse 7400 is now ready for use.

If you want to register the handset to another DECT GAP compatible base station that is not in the BT Diverse 7000 range you will need to refer to the user guide for that base for registration instructions.

You can register up to 5 handsets to a BT Diverse base. If there are already 5 registered, the registration will fail. You must de-register a handset before you can register a new one. See the full BT Diverse 7410 user guide online at www.bt.com/producthelp for instructions.

If registration was not successful first time, repeat the process again in case the base registration period ran out of time.

1 The display will show 'Please Recharge' and once the batteries have charged for 24 hours and you are close to the base station, press the left soft key (F3). The display will show 'Press and Hold Base Find Key'. The 'Find' button is located on the Diverse base underneath where the handset sits. Press and hold the 'Find' button on the base for approximately 8 seconds until the base beeps, then release. Immediately press 'OK' on the handset to confirm. The base will go into registration mode for 90 seconds and will beep when registration is successful. The handset will automatically be assigned the next available handset number and registration is now complete.

2 24 hours and you are close to the base station, press the left soft key (F3). The display will show 'Press and Hold Base Find Key'. The 'Find' button is located on the Diverse base underneath where the handset sits. Press and hold the 'Find' button on the base for approximately 8 seconds until the base beeps, then release. Immediately press 'OK' on the handset to confirm. The base will go into registration mode for 90 seconds and will beep when registration is successful. The handset will automatically be assigned the next available handset number and registration is now complete.

2 Register

General information

For information on safety instructions, cleaning, technical information or connecting to a switchboard, please refer to the 'General Information' section in the full user guide at www.bt.com/producthelp

Guarantee

Your BT Diverse 7400 is guaranteed for a period of 12 months from the date of purchase.

Subject to the terms listed below, the guarantee will provide for the repair of, or at BT's or its agent's discretion the option to replace the BT Diverse 7400, or any component thereof, (other than batteries), which is identified as faulty or below standard, or as a result of inferior workmanship or materials. Products over 28 days old from the date of purchase may be replaced with a refurbished or repaired product.

The conditions of this guarantee are:

- The guarantee shall only apply to defects that occur within the 12 month guarantee period.
- Proof of purchase is required.
- The equipment is returned to BT or its agent as instructed.

This guarantee does not cover any faults or defects caused by accidents, misuse, fair wear and tear, neglect, tampering with the equipment, or any attempt at adjustment or repair other than through approved agents.

This guarantee does not affect your statutory rights.

For further information within and outside the 12 month guarantee, please refer to the full user guide at www.bt.com/producthelp

Product disposal instructions

The symbol shown here and on the product means that the product is classed as Electrical or Electronic Equipment and should not be disposed with other household or commercial waste at the end of its working life.

The Waste of Electrical and Electronic Equipment (WEEE) Directive (2002/96/EC) has been put in place to recycle products using best available recovery and recycling techniques to minimise the impact on the environment, treat any hazardous substances and avoid the increasing landfill.

Product disposal instructions for residential users

When you have no further use for it, please remove any batteries and dispose of them and the product as per your local authority's recycling processes. For more information please contact your local authority or the retailer where the product was purchased.

Product disposal instructions for business users

Business users should contact their suppliers and check the terms and conditions of the purchase contract and ensure that this product is not mixed with other commercial waste for disposal.

Warning

This equipment is not designed for making emergency telephone calls when the power fails. Alternative arrangements should be made for access to emergency services.

R&TTE Directive & Declaration of Conformity

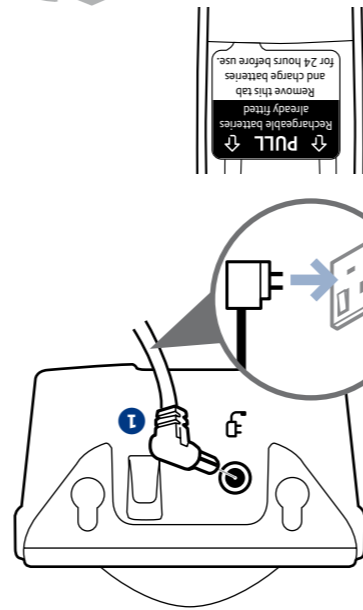
This product is intended for use within the UK for connection to the public telephone network and compatible switchboards.

This equipment complies with the essential requirements for the Radio Equipment and Telecommunications Terminal Equipment Directive (1999/5/EC).

For a copy of the Declaration of Conformity please refer to www.bt.com/producthelp

If you ever need to remove the batteries, simply slide open the battery compartment cover and using the finger grip the batteries and pull them out.

Important: Charge the handset batteries for 24 hours or your phone may not work.



1 Plug in and charge

BT & British Gas
Working together, supporting energy saving products
BT & British Gas have joined forces to help our customers find new ways to save energy around the home, so we can all do our bit for the environment & save money too!

BT is a sustainability leader

To find out how we're making our products greener visit

bt.com/betterworld/products

Offices worldwide

The services described in this publication are subject to availability and may be modified from time to time. Services and equipment are supplied subject to British Telecommunications plc's respective standard conditions of contract. Nothing in this publication forms any part of a contract.

© British Telecommunications plc 2009.
Registered Office: 81 Newgate Street, London EC1A 7AJ.
Registered in England No. 1800000.

Designed and produced by The Art & Design Partnership Ltd.

Printed in China / Issue 1 / ADP11-09



BT Diverse 7400 User Guide



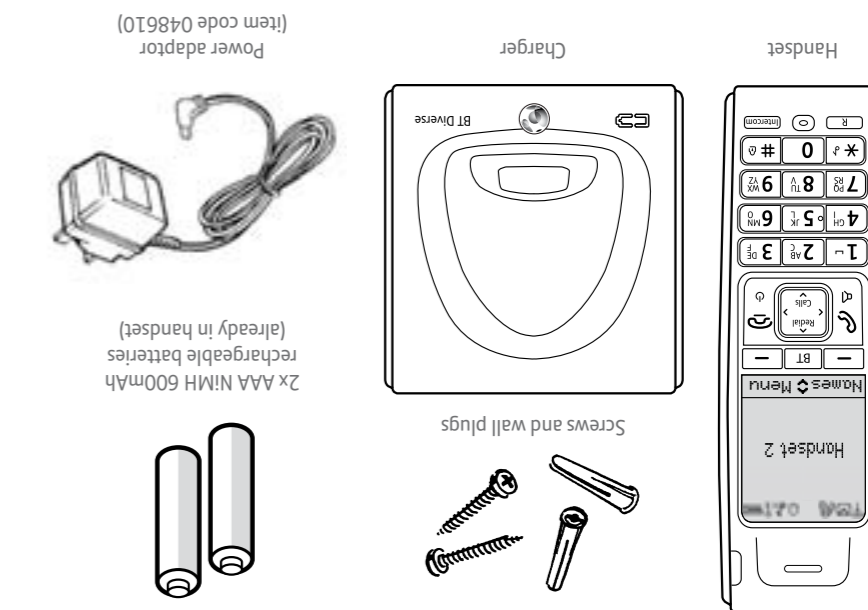
- 1 Plug in and charge
- 2 Register
- 3 Go!



Setting up is easy. Just follow the simple steps in this guide.

If you need further assistance, please visit our website www.bt.com/producthelp to view our advanced user guide or call our helpdesk on 0800 218 2182*

* Calls made from within the UK mainland network are free. Mobile and International call costs may vary.



Check box contents

Important: Only use the power adaptor and rechargeable batteries supplied in this box or this product may not work. Any replacement rechargeable batteries must be of the same type and are available from the BT Diverse Helpline. BT accepts no responsibility for damage caused to your BT Diverse 7400 by using any other type of batteries.

Your phone

Handset

Indicates new text messages.
Range indicator: On=in range. Flashing=out of range or not registered to base.

BT Opens BT Services menu.

Redial Press to open and scroll through Redial list. In talk mode adjusts earpiece volume. Scroll up.

Left soft key Press to access names in the phonebook. Select options on screen. Go back to previous menu level and clear digits and characters.

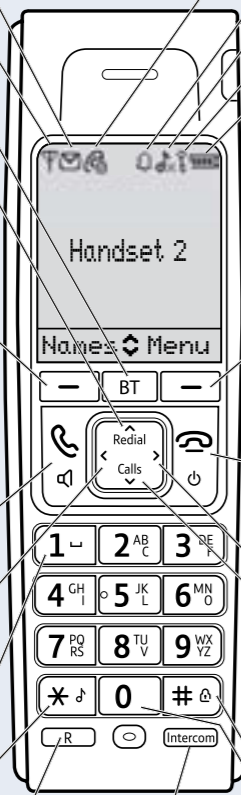
Call Make/receive a call. In talk mode, press to switch handsfree on/off.

Left arrow Scroll left through menu options available. Move cursor to the left.

Space Use to enter a space when entering text.

Star Press and hold to switch handset ringer on/off. When entering text, press to switch between upper and lower case letters.

R For use with switchboard/PBX and BT Calling Features.



Indicates new missed calls. To remove the icon you need to view missed calls. See the Caller Display section opposite.

Alarm set.

Handset ringer off.

The keypad is locked.

Battery status indicator. (scrolls to indicate charging)

Headset socket (on side of handset) Headset not included. See full user guide online at www.bt.com/producthelp for further details and where to obtain a suitable headset.

Right soft key Press to enter menu. Press to select the option displayed on the screen.

Call End a call. Press and hold to switch handset off/on. In menu mode, press to return to standby.

Right arrow Scroll right through menu options available. Move cursor to the right.

Calls Opens Calls list. In talk mode, adjusts earpiece volume. Scroll down.

Press and hold to lock/unlock the keypad.

0 Press and hold to enter a Pause in a phonebook entry. Use to enter punctuation marks when entering text.

Intercom Use to make internal calls (where more than one handset is registered).

Navigating the menus

When the handset is switched on and in standby:

Press the right soft key **Menu** to open the main menu.

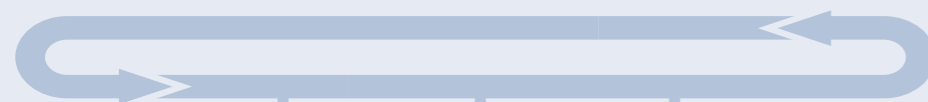
Then use the **Left** or **Right** buttons to scroll through the available options.

Press the right soft key **OK** to select a menu option or the left soft key **Back** to return to the previous screen.

Use the **Redial** or **Calls** buttons to scroll through sub menu options and press the right soft key **OK** to select or the left soft key **Back** to return to the previous screen.

To exit a menu and return to standby, press **Call**.

Menu map



- | | | |
|---------------|--------------|-----------------|
| Text | Sound | Settings |
| Write Message | Ringer | Date & Time |
| Inbox | Tones | Alarm |
| Outbox | | Display |
| Draftbox | | HS Settings |
| Template | | BS Settings |
| Settings | | |

Some menus are accessed by pressing the relevant feature button, for example **Calls** for the calls list, **Redial** for the redial list, **BT** for BT Services and the left soft key **Names** for the phonebook.

3 Go!

If you have registered to a base in the BT Diverse 7000 range then all the following features are available. If you have registered to another make/type of handset it is possible that some features, e.g. Caller Display will not work correctly.

Set time and date

Providing you have subscribed to your network's Caller Display service the date and time is set automatically when you receive your first call. To set the date and time manually follow the procedure below:

Press the right soft key **Menu** (Menu) and scroll **Left** to Settings, press the right soft key **OK**.

Date & Time is highlighted, press OK. Time Format is highlighted, press OK.

Press **Redial** or **Calls** to choose 24 Hour or 12 Hour and press OK.

Press **Calls** to Date Format and press OK. Scroll **Redial** or **Calls** to choose DD/MM/YYYY or MM/DD/YYYY and press OK.

Press **Calls** to Enter Time and press OK. Enter the time using the keypad as either the 24 or 12 hour format (previously selected) e.g. 17:30 or 05:30 for 5.30pm. If 12 hour was chosen, press **Redial** or **Calls** to select AM or PM and press OK.

Press **Calls** to Enter Date and press OK. Enter the date, e.g. 09.04.2010 for 9 April 2010. Press OK.

Making calls

Press **Call** then dial the phone number. Press **Call** to end the call.

Answering calls

If you have subscribed to Caller Display, the caller's details will be displayed before you answer (see the full user guide online at www.bt.com/producthelp for details).

Lift the handset from the charger to answer incoming calls.

If the handset is **not** on the charger, press **Call**.

Handsfree

Press **Call** during a call to switch the call to loudspeaker.

Secrecy

Press the left soft key **Secrecy** during a call to activate secrecy mode.

Press the left soft key **Secrecy** again (Secrecy) to return to your caller.

Redial

Press **Redial**, scroll **Redial** or **Calls** to choose the number you want.

Press **Call** to redial the number.

Phonebook

Storing new directory entries manually (up to 200)

Press **Names**. New Entry is highlighted, press OK.

Enter the name then press OK. You may need to press the same button a few times until the letter you want is displayed. For example, press **2AB** once for A, or twice for B.

Number is displayed. Enter the number and press OK.

GROUP is displayed and the group ringtone melody is played (you cannot change the ringtone at this stage). To add the entry to a call group, scroll **Left** or **Right** to select a group and press OK. Display shows Saved (if you don't want to use this feature simply select No GROUP for all entries).

For further information on call groups or to select call group ringtones, please refer to the full BT Diverse 7410 user guide online at www.bt.com/producthelp

Dialling a directory entry

Press **Names**, scroll **Redial** or **Calls** to the entry you want. Press **Call** to dial the number.

Copy entire phonebook to another handset registered to a Diverse 7000 base

Press **Names**. The first entry is displayed.

Press **Options** and scroll **Calls** to COPY All and press OK.

Press **Redial** or **Calls** to select the handset you want to copy all entries to and press OK.

At the receiving handset the display will show Accept PB entries.

Press Yes to confirm or No to cancel. When successful the display shows ✓ Finished.

Caller Display and the Calls list

You must subscribe to a Caller Display service for this feature to work. Your network provider may charge you for this service.

View and dial from the Calls list

Press **Calls**, the most recent entry in the list is displayed. Press **Redial** or **Calls** to scroll through the list.

Press **Options**. Details is highlighted, press OK. The call details will be displayed.

Press **Call** to dial a displayed entry.

BT Services button

If you are not connected to the BT network some of these services may not be available. Please contact your network provider for more information on network services. You may be charged for the use of these services.

The BT button **BT** provides quick access to a range of useful pre-stored numbers and further BT Calling Features. You can access the following services: BT Diverse Helpline, BT Directory Enquiries, Call Divert on/off/check and Call Waiting on/off/check.

Press **BT**. Helpdesk is highlighted. You can now scroll **Redial** or **Calls** through the options available.

When the service you require is displayed, press **Call** to call and follow any announcements.

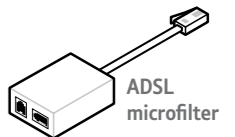
Text messaging

Before sending and receiving text messages you need to register to the text messaging service and subscribe to Caller Display. You will be automatically registered to the text message service when you send your first text. See the full BT Diverse 7410 user guide online at www.bt.com/producthelp for details.

Help

Most problems can be fixed with a few simple checks.

Problem	Solution
No dial tone	Only use the cable and batteries supplied. Make sure the power adaptor cable is plugged in correctly.
Poor speech quality	Make sure the product is not located too close to other electrical appliances. This can also help improve the handset range from the base.
Battery icon not full/handset dead	Make sure you charge the batteries for 24 hours before use to ensure maximum battery performance.
Using broadband on the same phone line?	Make sure you plug the base station telephone cable into the wall socket via an ADSL microfilter (not supplied), otherwise you may have problems with this product and your broadband service.
What is the BT Diverse 7000 range base default PIN?	Base default PIN = 0000



Find out more

- New Frequently Asked Questions available at www.bt.com/producthelp
- If you need more detailed instructions, please refer to the BT Diverse 7410 full user guide which can be downloaded from www.bt.com/producthelp
- If you cannot find the answer to your problem in the full online user guide, then please call the free Helpline on 0800 218 2182* or email bt.helpdesk@vtecheurope.com. Our dedicated advisors are more likely to be able to help you than the retailer where you made your purchase.
- This document is also available in other formats, such as Large print, Braille and Audio CD. If you would like a copy, please call 0800 218 2182*.