

Your phone

Handset

Indicates new text messages.
Range indicator: On=in range. Flashing=out of range or not registered to base.

BT Opens BT Services menu.

Redial Press to open and scroll through Redial list. In talk mode adjusts earpiece volume. Scroll up.

Left soft key Press to access names in the phonebook. Select options on screen. Go back to previous menu level and clear digits and characters.

Call Make/receive a call. In talk mode, press to switch handsfree on/off.

Left arrow Scroll left through menu options available. Move cursor to the left.

1 Use to enter a space when entering text.

*** (Star)** Press and hold to switch handset ringer on/off. When entering text, press to switch between upper and lower case letters.

R For use with switchboard/PBX and BT Calling Features. **Intercom** Use to make internal calls.

Indicates new missed calls. To remove the icon you need to view missed calls. See the Caller Display section below.

Alarm set.

Handset ringer off.

The keypad is locked.

Battery status indicator. (scrolls to indicate charging)

Headset socket (on side of handset) Headset not included. See full user guide online at www.bt.com/producthelp for further details and where to obtain a suitable headset.

Right soft key Press to enter menu. Press to select the option displayed on the screen.

Call End a call. Press and hold to switch handset off/on. In menu mode, press to return to standby.

Right arrow Scroll right through menu options available. Move cursor to the right.

Calls Opens Calls list. In talk mode, adjusts earpiece volume. Scroll down.

(Hash) Press and hold to lock/unlock the keypad.

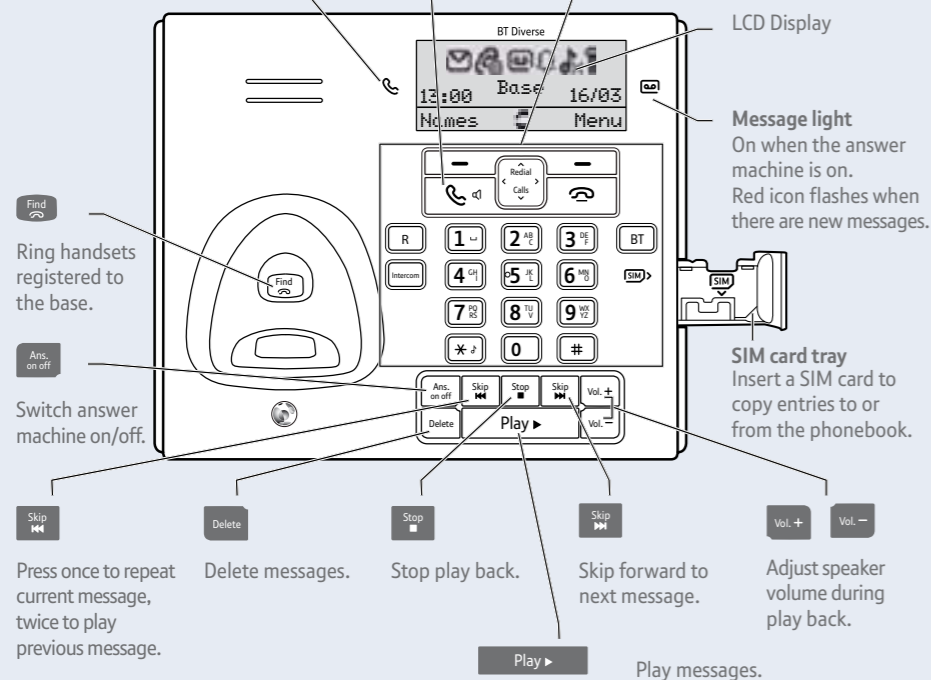
0 Press and hold to enter a Pause in a phonebook entry. Use to enter punctuation marks when entering text.

Base

Power/In use light Green light flashes when phone rings, during a call and handset registration.

The base buttons outlined here have the same function as the handset buttons described above.

When using the **Call** button, all calls you make and receive will be in handsfree mode.



Find Ring handsets registered to the base.

Ans. on/off Switch answer machine on/off.

Press once to repeat current message, twice to play previous message.

Delete messages.

Stop play back.

Skip forward to next message.

Adjust speaker volume during play back.

Play messages.

3 Go!

The following instructions can be carried out using the handset or the base buttons unless stated otherwise.

Making calls

Calls made or received using the base will be in handsfree mode. Press **Call** (handset) or **Call** (base) then dial the phone number. Press **Call** (handset) or **Call** (base) to end the call.

Answering calls

If you have subscribed to Caller Display, the caller's details will be displayed before you answer (see the full user guide online at www.bt.com/producthelp for details).

Lift the handset from the base to answer incoming calls. If the handset is **not** on the base, press **Call** on the handset or **Call** on the base.

Handsfree from the handset

Press **Call** during a call to switch the call to loudspeaker.

Secrecy

Press the left soft key **Secrecy** during a call to activate secrecy mode. Press the left soft key **Off** again to return to your caller.

Redial

Press **Redial**, scroll **Redial** or **Calls** to choose the number you want. Press **Call** or **Call** to redial the number.

Phonebook

Storing new directory entries manually (up to 200)

Press **Names**. **New Entry** is highlighted, press **OK**.

Enter the name then press **OK**. You may need to press the same button a few times until the letter you want is displayed. For example, press **2** once for **A**, or twice for **B**.

Number is displayed. Enter the number and press **OK**.

GROUP is displayed and the group ringtone melody is played (you cannot change the ringtone at this stage). To add the entry to a call group, scroll **Left** or **Right** to select a group and press **OK**. Display shows **Saved** (if you don't want to use this feature simply select **NO GROUP** for all entries).

For further information on call groups or to select call group ringtones, please refer to the full user guide online at www.bt.com/producthelp

Dialling a directory entry

Press **Names**, scroll **Redial** or **Calls** to the entry you want. Press **Call** or **Call** to dial the number.

SIM card reader/writer

Copy SIM card entries to phonebook

(To copy phonebook entries to a SIM card, see the full online user guide)

Please note the following points otherwise copying will not work: If your SIM card is PIN protected you must remove the PIN before taking the SIM out of your mobile. Entries must be stored on the SIM card itself and not just in your mobile phonebook.

Insert the SIM card into the SIM card tray on the side of the base. The SIM card should have the gold chip facing upwards.

Press **Names**. If no phonebook entries are present, scroll **Calls** to **SIM to Phone** and press **OK**. If phonebook entries exist, scroll **Calls** to any entry and press **Options**. Scroll **Calls** to **SIM COPY** and press **OK**.

Select **SIM to Phone** and press **OK**. A list of SIM entries is displayed.

Select the entry you wish to copy to the phonebook (or any entry if you wish to copy all entries) and press **OK**.

Press **Redial** or **Calls** to select **COPY ENTRY** (to copy this entry only) or **COPY ALL** (to copy all entries) and press **OK**. When successful the display will show **✓ Copied**.

Caller Display and the Calls list

You must subscribe to a Caller Display service for this feature to work. Your network provider may charge you for this service.

View and dial from the Calls list

Press **Calls**, the most recent entry in the list is displayed. Press **Redial** or **Calls** to scroll through the list.

Press **Options**. **Details** is highlighted, press **OK**. The call details will be displayed.

Press **Call** or **Call** to dial a displayed entry.

Answering machine

Your answering machine is on and ready to record messages. The controls are shown in the base diagram to the bottom left and the features can also be accessed via the handset Answer Machine menu.

Recording your own outgoing message

Press **Menu**, scroll **Right** to **Answer Machine**, press **OK**.

Press **Calls** to scroll to **Outgoing Mes.** and press **OK**. Scroll **Calls** to **Record Message** and press **OK**.

Press **Redial** or **Calls** to select **Answer & Record** or **Answer Only** and press **OK**.

After the long beep, speak your message into the handset. When finished, press **Save**. Your message will be played back to you. If you want to delete it, press **Delete** during playback, or press **OK** to save it.

Ring delay (set number of rings before answer machine picks up the call)

For compatibility with the BT 1571 service do not set the ring delay to more than 6 rings.

Press **Menu**. Scroll **Right** to **Answer Machine**. Press **OK**.

Scroll **Calls** to **Ans. Settings** and press **OK**.

Scroll **Calls** to **Answer Delay** and press **OK**. Press **Redial** or **Calls** to select the number of rings (2-9 or **Timer Saver**) and press **OK** to save.

For detailed instructions on all the answering machine features see the full user guide online at www.bt.com/producthelp

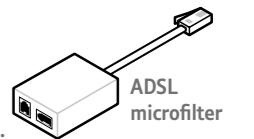
Text messaging

Before sending and receiving text messages you need to register to the text messaging service and subscribe to Caller Display. You will be automatically registered to the text message service when you send your first text. See the full user guide online at www.bt.com/producthelp for details.

Help

Most problems can be fixed with a few simple checks.

Problem	Solution
No dial tone	Only use the cables and batteries supplied. Make sure both the power adaptor cable and telephone line cord are plugged into the correct sockets on the base. Make sure the power is switched on at the power wall socket and that the telephone line cord is plugged in correctly at the telephone wall socket.
Poor speech quality	Make sure the product is not located too close to other electrical appliances. This can also help improve the handset range from the base.
Battery icon not full/handset dead	Make sure you charge the batteries for 24 hours before use to ensure maximum battery performance.
Using broadband on the same phone line?	Make sure you plug the phone into the wall socket via an ADSL microfilter (not supplied), otherwise you may have problems with this product and your broadband service.



Find out more

- New Frequently Asked Questions available at www.bt.com/producthelp
- If you need more detailed instructions, a full user guide is available to download from www.bt.com/producthelp
- If you cannot find the answer to your problem in the full online user guide, then please call the free Helpline on 0800 218 2182* or email bt.helpdesk@vtecheurope.com. Our dedicated advisors are more likely to be able to help you than the retailer where you made your purchase.
- This document is also available in other formats, such as Large print, Braille and Audio CD. If you would like a copy, please call 0800 218 2182*.